

*Erratum*

## **Tectonic significance of the Taitung Canyon, Huatung Basin, east of Taiwan**

Jean-Claude Sibuet<sup>1,\*</sup>, Shu-Kun Hsu<sup>2</sup> and Alain Normand<sup>1</sup>

<sup>1</sup>*Ifremer Centre de Brest, B.P. 70, 29280 Plouzané Cedex, France*

<sup>2</sup>*Institute of Geophysics, National Central University, Chung-Li, Taiwan 32054*

*\*Corresponding author (E-mails: jcsibuet@ifremer.fr; hsu@oc.gep.ncu.edu.tw; alain.normand@ifremer.fr)*

Marine Geophysical Researches (2004) 25: 95–107  
DOI 10.1007/s11001-005-0736-2

The second part of Figure 6 was missing in the original. The complete Figure 6 is shown on the following pages.

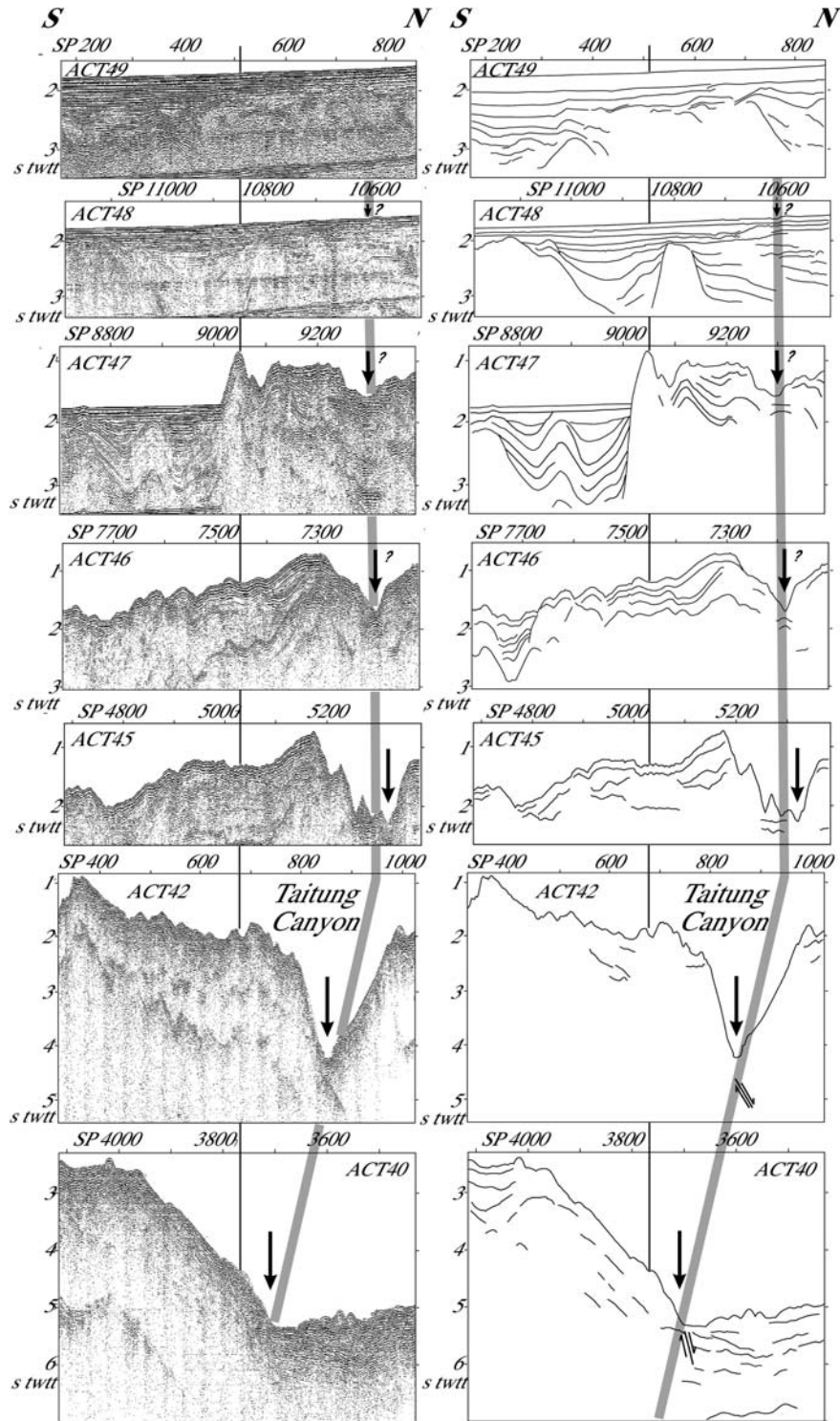


Figure 6. Time migrated seismic reflection profiles located in Figure 5b and aligned on the straight line B' (located in Figure 5b). Vertical exaggeration: 13. Interpretation of the 12 ACT seismic reflection profiles on the right-hand side. Normal faults are identified on ACT profiles 42–85. SP, shot point; s twtt, second two-way travel time.

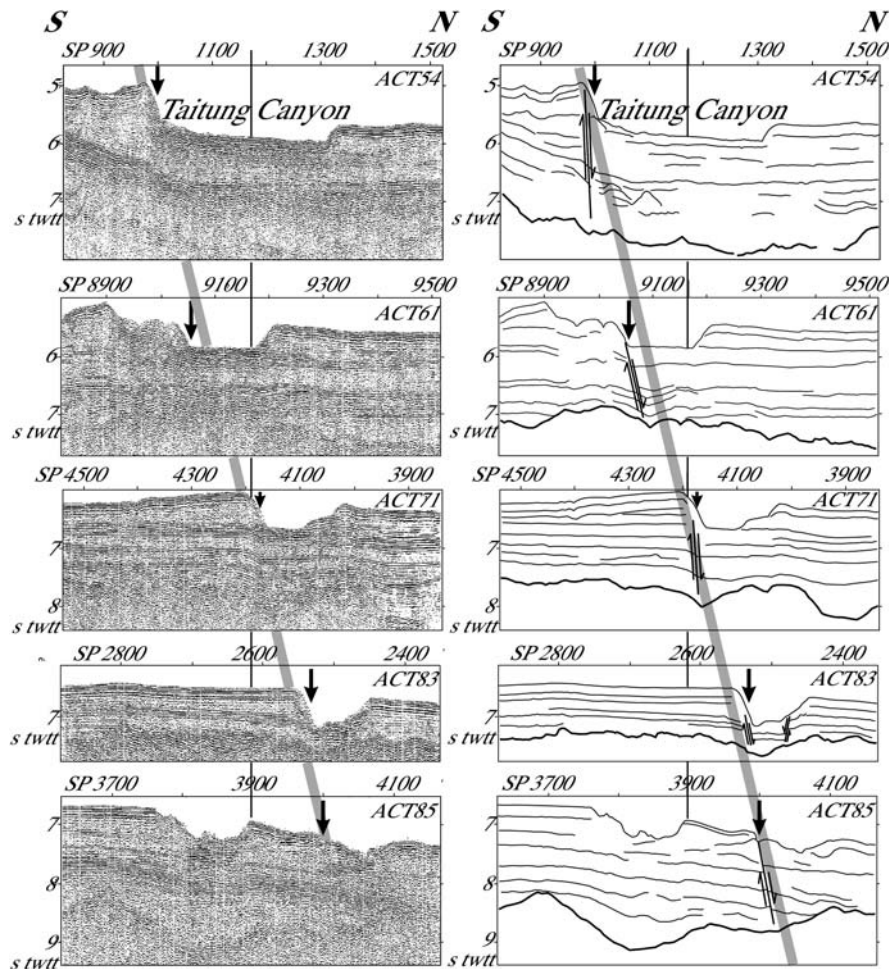


Figure 6. Continued